

State of Wyoming Corner Record

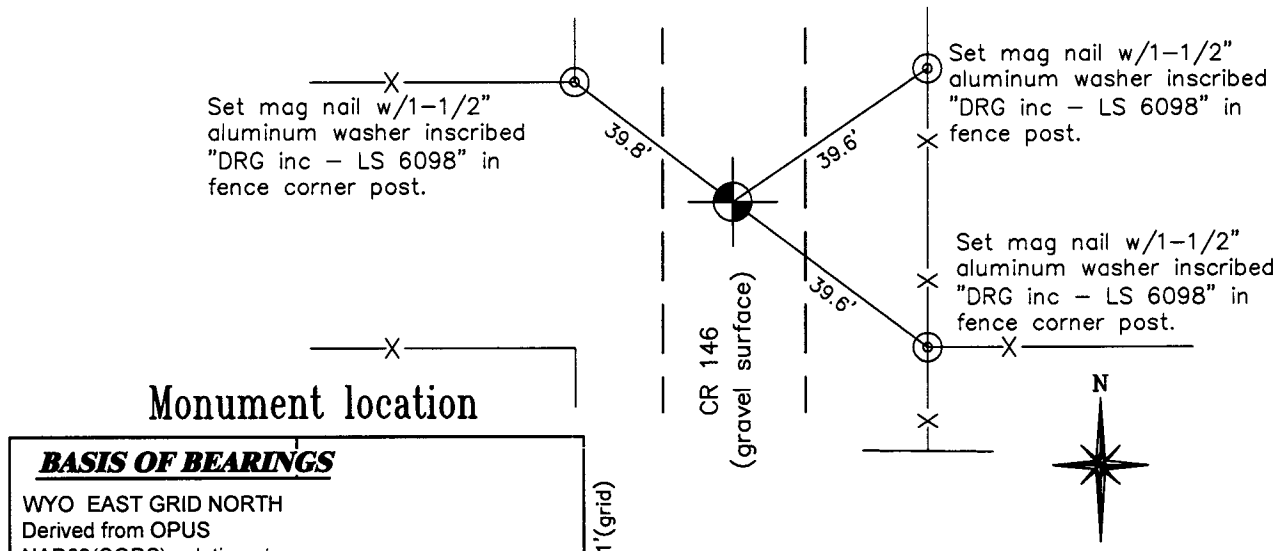
(In compliance with the *CORNER PERPETUATION AND FILING ACT*, Wyoming Statutes, 1997 Section 33-29-140 et. seq., and the Rules and Regulations of the Board of Professional Engineers and Professional Land Surveyors)

Reverse side of this form may be used if more space is needed.

Record of original survey and citation of source of historical information (if corner is lost or obliterated). Description of corner monumentation evidence found and/or monument and accessories established to perpetuate the location of this corner. Sketch of relative location of monument, accessories, and reference points with course and distance to adjacent corner(s) (if determined in this survey). Method and rationale for reestablishment of lost or obliterated corner.

U.S.G.L.O. 1871 Record: Set a granite boulder 16x12x8 for corner to sections 14, 15, 22 & 23.

Found No. 5 rebar with Aluminum Cap missing, being the same rebar as noted in corner record by PLS 2500 dated November 9, 1988. Rehabilitate with a 2-1/2" Aluminum Cap on a no. 6 rebar set 0.7' below the road surface and inscribed as shown below.



BASIS OF BEARINGS

WYO EAST GRID NORTH
 Derived from OPUS
 NAD83(CORS) solution at
 USC&GS (NGS) station "MITS"
 NAD83(CORS96) WYO. EAST
 SPC COORDINATES:
 N 209429.77
 E 838460.60

15

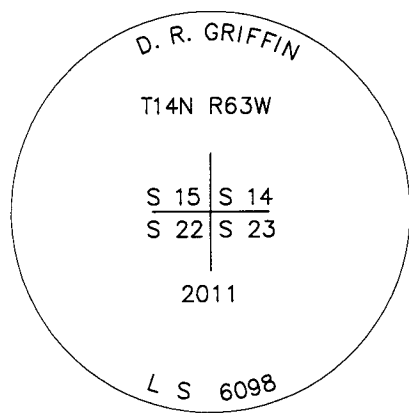
5250.41'(grid)

N00°03'07"W

S 89°40'00" W 2624.11'(grid) S 89°38'45" W 2621.47'(grid)

WYO. SPC EAST GRID NORTH

Found No. 5 rebar with Al. Cap missing. Rehabilitate with a 2-1/2" Aluminum Cap on a 30" no. 6 rebar 0.7' below road surface and inscribed as shown below.



Monument Inscription

Date of Field Work: 6/12/11

Office Reference: 18661

Cross Index Plat

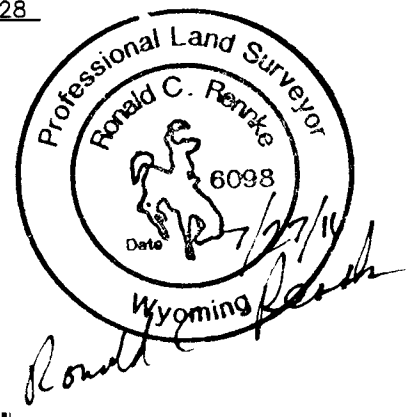
1	2	3	4	5	6	7	8	9	10	11	12	13	14	15	16	17	18	19	20	21	22	23	24	25	
A																									A
B																									B
C		6		5		4		3		2		1													C
D																									D
E																									E
F																									F
G			7		8		9		10		11		12												G
H																									H
J																									J
K																									K
L																									L
M																									M
N																									N
O																									O
P																									P
Q																									Q
R																									R
S																									S
T																									T
U																									U
V																									V
W																									W
X																									X
Y																									Y
Z																									Z
1	2	3	4	5	6	7	8	9	10	11	12	13	14	15	16	17	18	19	20	21	22	23	24	25	

Firm/Agency, Address

RONALD C. RENNKE
D. R. GRIFFIN & ASSOCIATES
1414 ELK STREET
ROCK SPRINGS, WYOMING 82901
 Telephone Number: (307) 362-5028

This corner record was prepared by me or under my direction and supervision.

SEAL & SIGNATURE



RECORDED 8/09/2011 AT 10:16 AM REC# 573775 BK# 2231 PG# 459
 DEBRA K. LATHROP, CLERK OF LARAMIE COUNTY, WY PAGE 1 OF 1

Corner Name Southeast Corner Section 15, T 14 N, R 63 W, 6th P.M.
 County: Laramie, Wyoming

Cross-Index No.: N-17